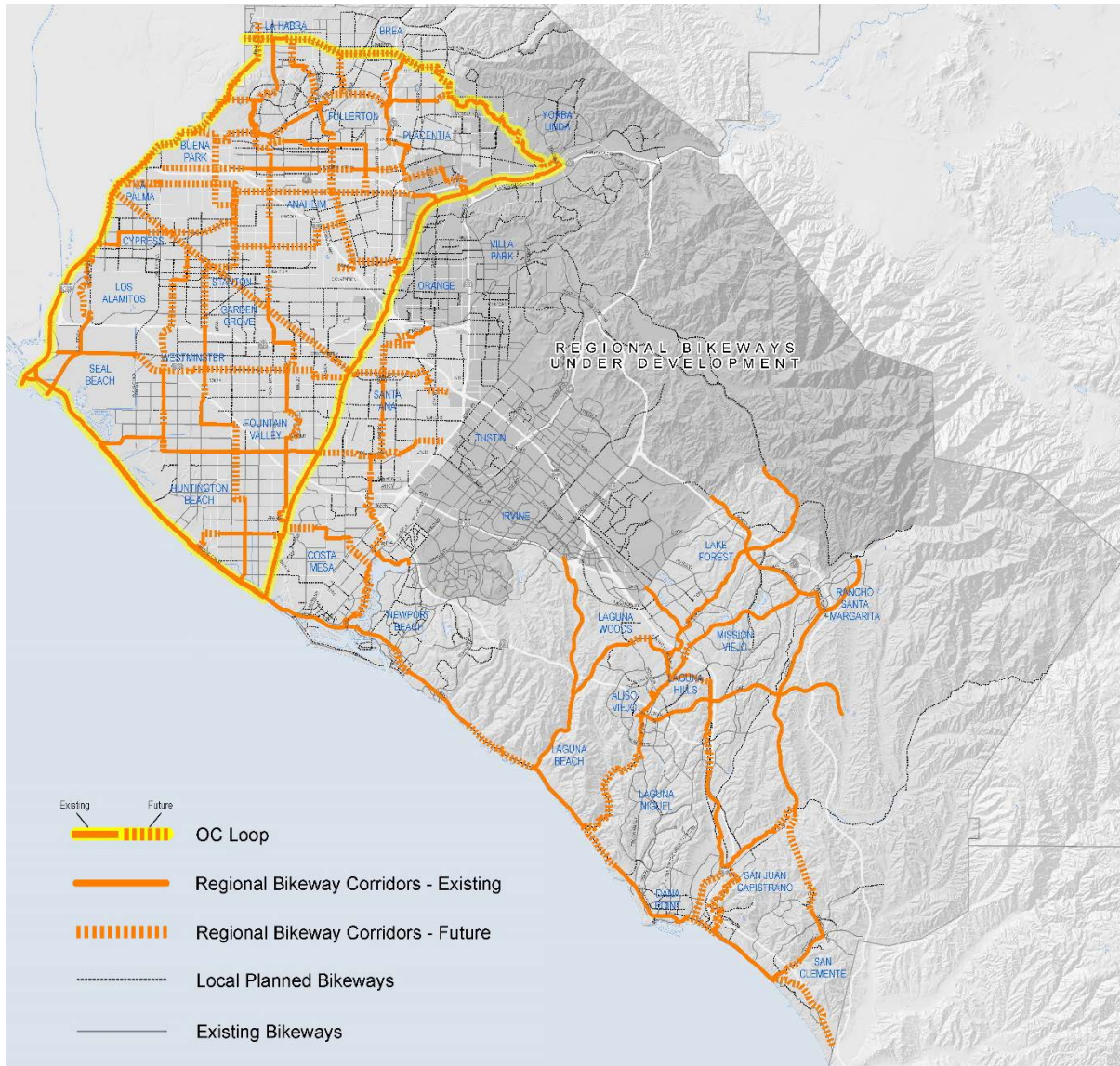
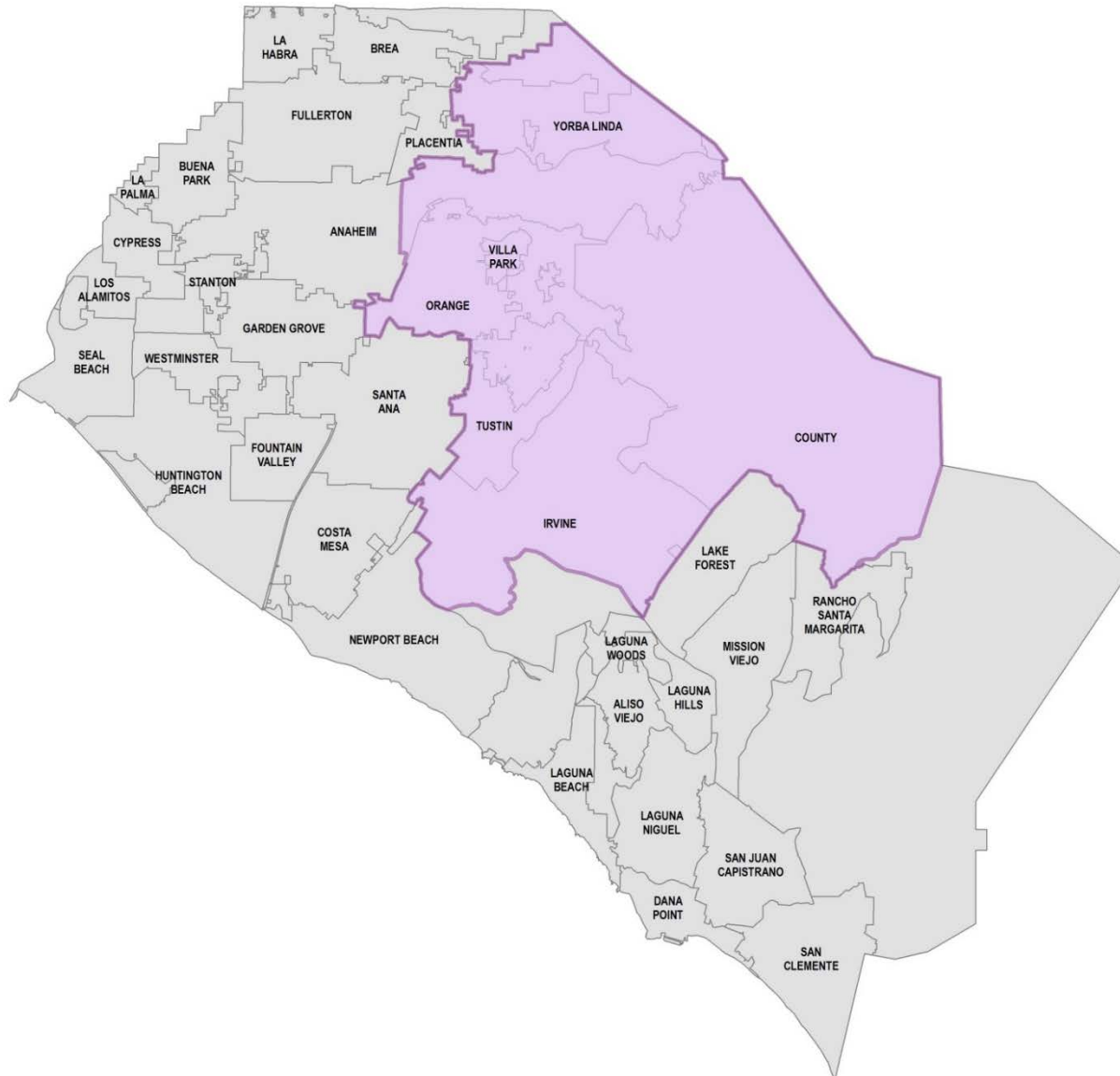


Regional Bikeways Planning Update

Regional Bikeways Network



OC Foothills Study Area



Public Participation



ROUNDTABLE DISCUSSION

IMAGINE YOUR COMMUNITY BY BIKE

June 4, 5:30-7:30pm

Irvine City Hall
1 Civic Center Plaza, Irvine, CA 92606

Please join us for a community roundtable discussion about efforts to improve regional connectivity for bicycling in the foothills areas of Orange County*. Provide feedback on the proposed regional bikeways network and how projects should be prioritized. To RSVP and keep up-to-date on this planning effort, please visit www.octa.net/bikeways.

*STUDY AREA INCLUDES:

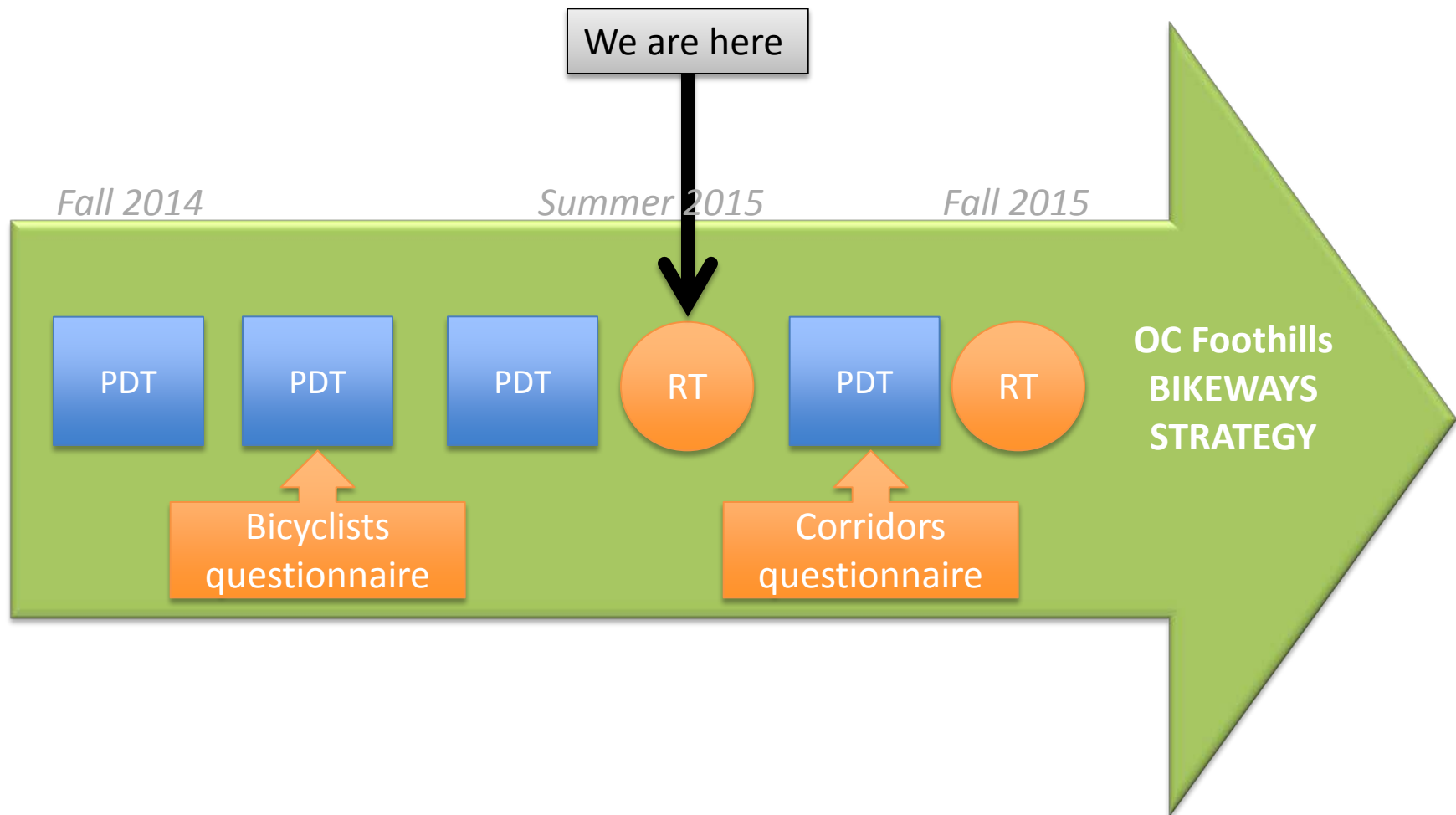
ANAHEIM HILLS,
IRVINE, ORANGE,
TUSTIN, VILLA PARK,
AND YORBA LINDA.

Project Development Team

- City / Agency Planners and Engineers
 - Technical perspective
 - Potential project sponsors

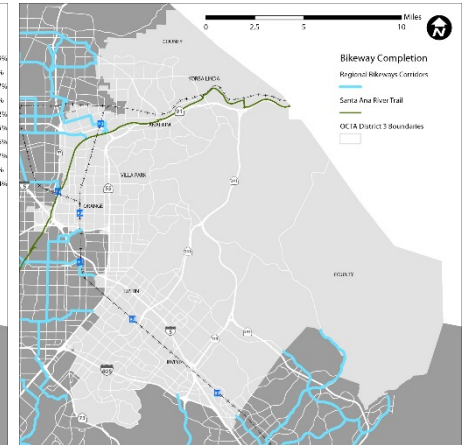
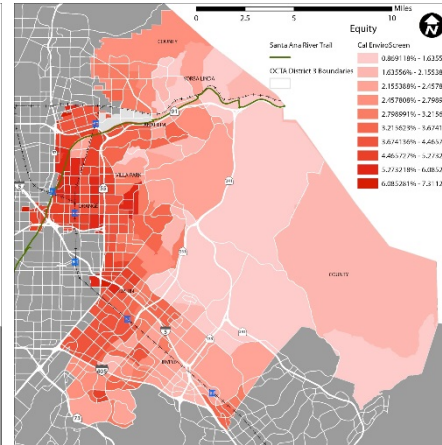
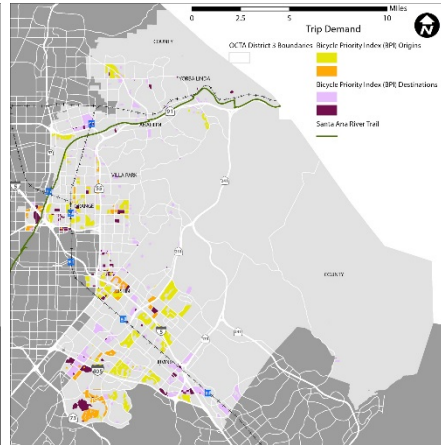
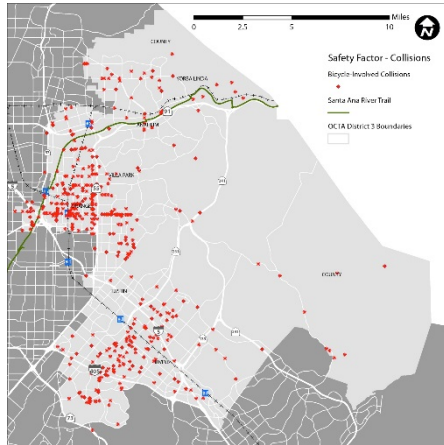


OC Foothills Schedule



Draft Evaluation Criteria

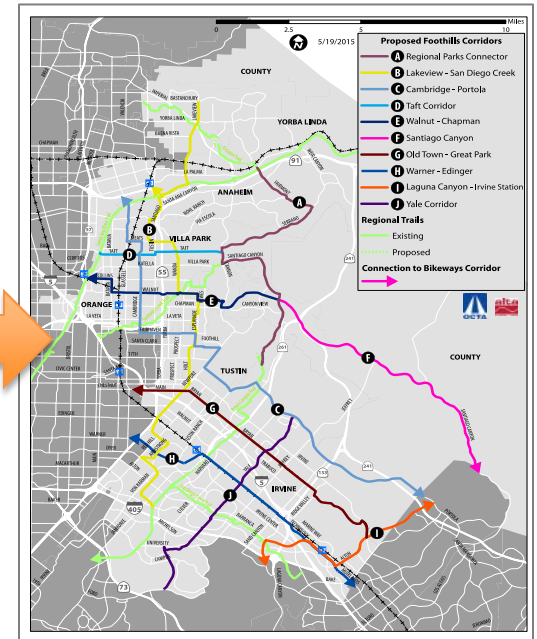
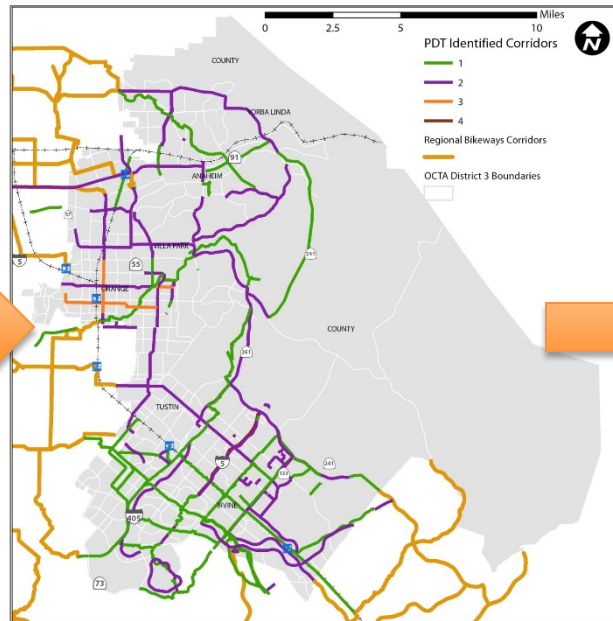
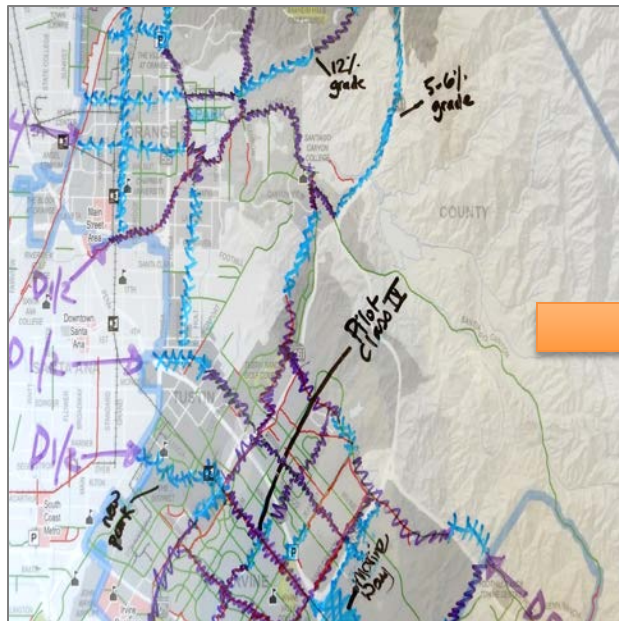
- Safety Needs
- Public support
- Trip Demand
- Ease of Implementation
- Cost per Benefits
- Avoids Steep Hills
- Socially Disadvantaged Areas



Draft Criteria Weights

Rank	Criterion	Weight
1	Safety Needs (Collisions & Traffic Stress)	29%
2	Public support	14%
3	Trip Demand	13%
4	Ease of Implementation	11%
5	Bikeway Completion	10%
6	Cost per Benefits	10%
7 (tie)	Avoids Steep Hills	6%
7 (tie)	Disadvantaged Areas	6%

Working Maps



Draft Corridors

- 10 corridors
- 100+ miles
- 4 train stations
- 3 major employment centers
- 5 regional parks



June 4 Roundtable Discussion

Proposed Foothills Corridors: Please identify your favorite corridors using the stickers provided

- A** Regional Parks Connector
●●●●●●●●●● Place Stickers Here
- B** Lakeview - San Diego Creek
●●●●●●●● Place Stickers Here
- C** Cambridge - Portola
●● Place Stickers Here
- D** Taft Corridor
●● Place Stickers Here
- E** Walnut - Chapman
Place Stickers Here
- F** Santiago Canyon
●●● Place Stickers Here
- G** Old Town - Great Park
●●●● Place Stickers Here
- H** Warner - Edinger
●●●●●●●● Place Stickers Here
- I** Laguna Canyon - Irvine Station
●●● Place Stickers Here
- J** Yale Corridor
●●●●●● Place Stickers Here



What we heard

- Accommodating equestrian, pedestrian, and bicyclists on the proposed Peters Canyon Regional Park trail.
- Connectivity to the Anaheim Canyon, Irvine, and Tustin Metrolink Stations
- Addressing conflicts at intersections and driveways
- Differing needs between road vs. casual bicyclists

Next Steps

- Finalize regional bike corridors and criteria
- Review draft ranking of corridors at another Roundtable Discussion in Fall 2015
- Support regional bikeway implementation!